



YOUR DESIGN PLAN

Clarity, costing and confidence before your swimming pond is designed and built.



Your *Everyday* Paradise

Your swimming pond starts with the design

Over the last 15 years, we have worked with hundreds of clients to design and build swimming ponds that are safe, clean, easy to maintain and built to last.

Our aim is to build the safest swimming ponds in the world, with every project designed around water quality, usability and long term performance.

A swimming pond at this level should not be guessed, rushed or priced properly from a brief conversation. It needs to be designed first.

That is why every Ponds by Michael Wheat project starts with a Design Plan. It gives us the time and detail needed to understand your site, your vision, the right filtration strategy, the likely investment and whether Ponds by Michael Wheat is the right fit for your project.

This brochure explains how the Design Plan works, what is included, and why it is the right first step before any serious build commitment is made.

Best wishes, Michael Wheat

Managing Director

A handwritten signature in black ink, appearing to read 'M. Wheat', with a long horizontal flourish extending to the right.



Contents

- We only build projects we have designed..... 06
- What your design plan includes..... 08
- Company intellectual property 10
- The Michael Wheat System..... 12
- Do I need planning permission? 16
- The Ponds by Michael Wheat Way 18
- The Ponds by Michael Wheat Way, explained..... 20
- Case studies 28
- Your next step 34



We only build projects we have designed...

Why we design first

We only build projects we have designed.

For a high-value swimming pond, the design controls almost everything: the layout, levels, access, filtration strategy, materials, build method, cost and long-term performance.

That level of detail cannot be resolved properly in a quick visit or from a few photographs. It needs a structured design process.

The design plan gives both sides clarity before a build commitment is made.





It allows us to understand the site properly, resolve the design, and prepare a realistic route into build.

It also protects the outcome. When we design the project ourselves, we know the thinking behind it, the engineering behind it and the standard it needs to be built to.

That is why the design plan is the first formal step in working with Ponds by Michael Wheat.

What your *Design Plan* includes

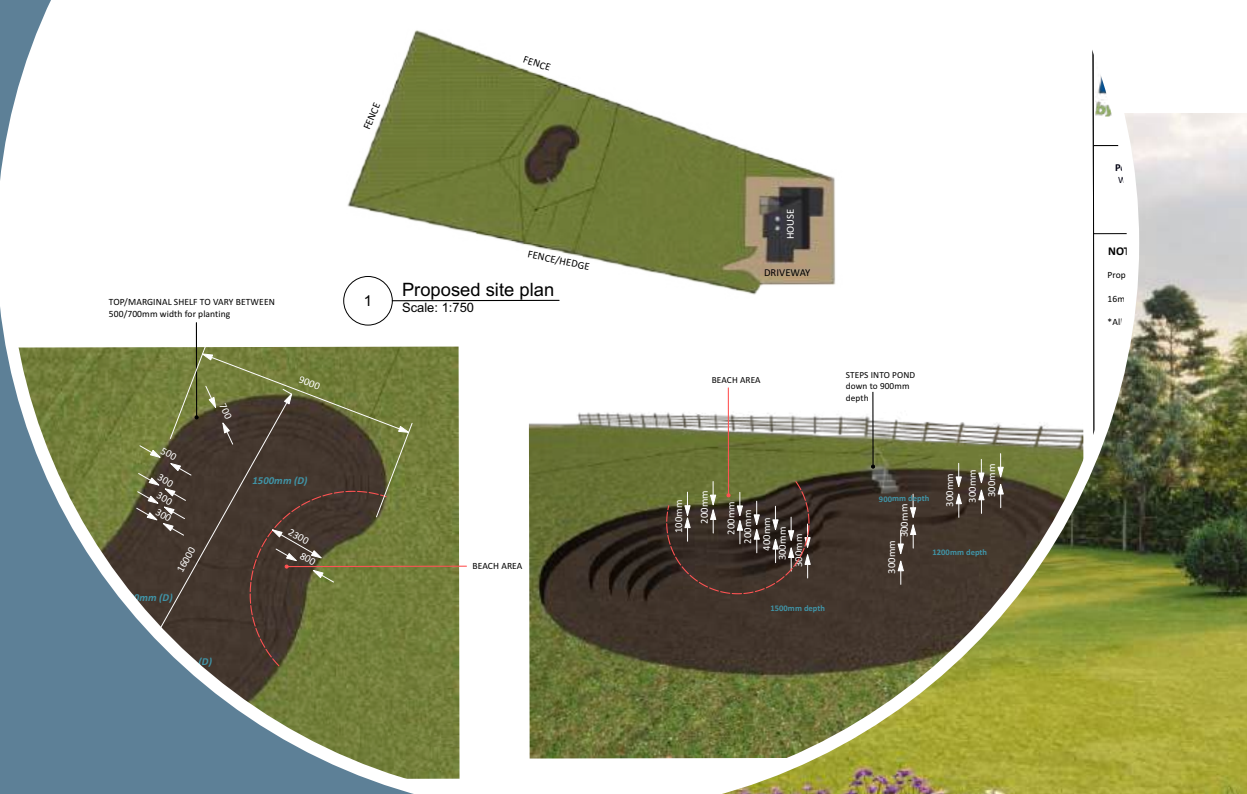
Your Design Plan gives you the clarity needed to move from initial vision to a properly considered build proposal.

Site survey and project consultation

- Dedicated consultant throughout the Design Plan Service.
- Site visit and project consultation.
- Access, logistics and feasibility review.
- Site measurements, levels and model capture.
- Material, water quality and technical considerations.

Design concept and project costing

- Concept design developed around your site, brief and landscape.
- Technical review of filtration, water movement and equipment.
- Costed proposal based on the agreed design direction.
- Progress review to discuss scope, investment and refinements.
- Proposal of works prepared around the agreed design.





The Investment for your Design Plan Service

Our Design Plan Service follows a clear, structured process and represents the first formal investment in your project.

The appropriate route will be confirmed after your consultation and Design Site Visit, before you make a commitment.

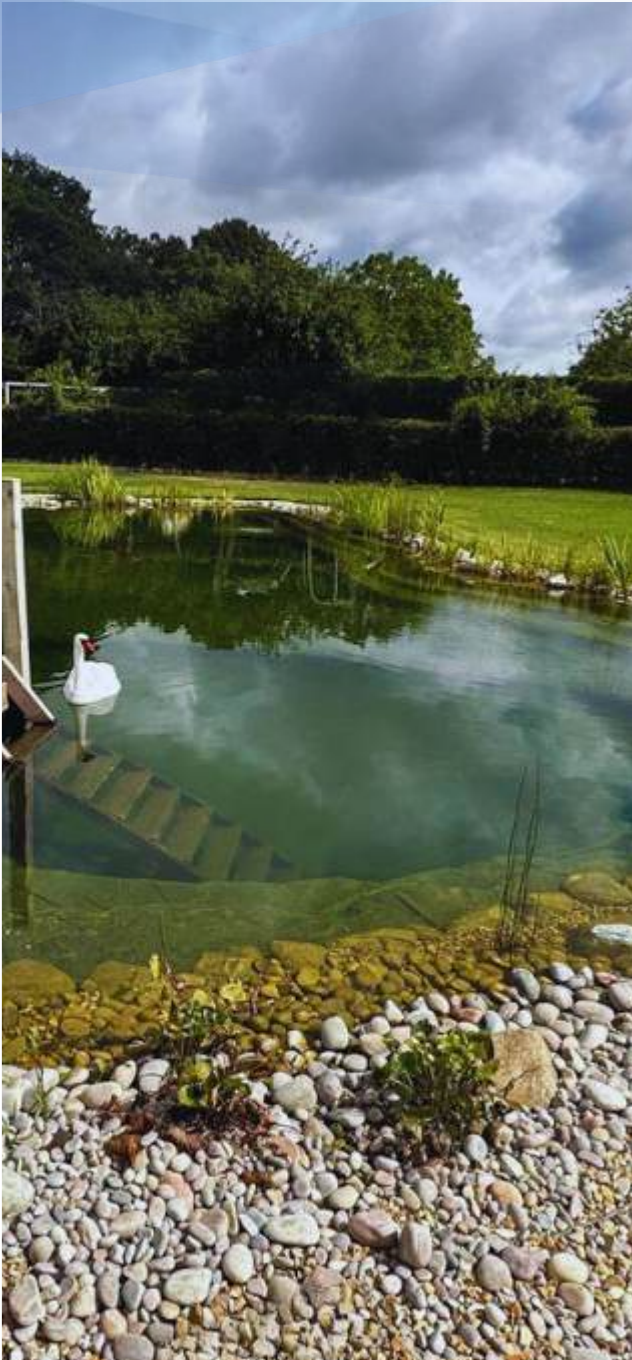
We provide Design Plan Services for swimming ponds, ponds, lakes and selected international projects.



Design reveal presentation

- Design reveal meeting with your consultant, either by video call or on site.
- Fully rendered project visuals.
- Technical research and filtration information.
- Equipment choices and water movement strategy.
- Materials selected to suit your landscape.
- Planting direction where required.
- Information on the company 5-year guarantee.
- Clear next step towards the construction proposal.

Technical drawings for planning or construction purposes are prepared from the agreed concept and released once the installation deposit has been paid.



Company intellectual property

At Ponds by Michael Wheat, our swimming ponds are the result of years of design, testing, refinement and on-site experience.

A high-performance swimming pond is not just a hole in the ground. It depends on the right design decisions, water movement, filtration strategy, equipment choices, materials, levels, access and long-term maintenance planning.

Your Design Plan Service gives you the design direction, visual understanding and project information needed to move forward with us.

It is not a self-build specification, construction manual or transferable technical system for another contractor to use.

We will explain the approach, equipment strategy and proposal of works clearly, but certain technical details, supplier knowledge, installation methods and internal processes remain protected as our intellectual property.

This protects the quality of our work, the performance of the finished pond and the knowledge we have built over many years.



The Michael Wheat System



An engineered approach to clear, controlled natural swimming water

Swimming ponds have been around for many years, with most traditional systems built around planted regeneration zones and gravel beds.

The idea is simple: swim in natural water, without chlorine, surrounded by planting that helps the pond blend into the garden.

The issue is that traditional plant-led systems can require a large amount of space, can be less predictable and can become maintenance heavy over time.

Ponds by Michael Wheat takes a different approach.

We design swimming ponds as engineered water systems. The pond still feels natural in the landscape, but the water quality is managed through controlled filtration, UV, aeration and designed circulation.

Traditional gravel-bed systems

- Large areas given over to planting and gravel
- Less usable swimming space
- Sediment can build up over time
- Water clarity can be less predictable
- More difficult to control bacteria without UV
- Maintenance can become more involved

The Ponds by Michael Wheat approach

- External filtration
- UV control
- Aeration
- Designed water movement
- Cleaner, deeper swimming area
- Fully usable water space





Why we do not use traditional gravel-bed systems

For the last 30 years, many swimming ponds have been built around large gravel beds and planted regeneration zones.

These areas are designed to help filter and balance the water naturally, but they have limitations.

They can take up a large amount of space, reduce the usable swimming area, collect sediment over time and become harder to maintain.

Water clarity can also be less predictable, and bacteria and pathogens are harder to control without UV.

Our focus is to create swimming ponds that are safe, easy to maintain and designed to be enjoyed for many years. That is why we do not build them this way.

We use external filtration, UV, aeration and controlled water movement to create a cleaner, deeper and fully usable swimming area.

What is the Michael Wheat System?

Our broad and holistic approach is simple. Tackle the CAUSE not just the PROBLEM.

Rather than relying on treatments to deal with symptoms, we design the system to manage the water properly from the start.

That means looking at water movement, filtration, UV, aeration, nutrients, phosphate levels, debris, oxygen and long-term maintenance as one complete system.

This is what allows us to create swimming ponds that feel natural in the garden, but perform with far more control behind the scenes.



Every Ponds by Michael Wheat system considers:

- Water movement and circulation
- External filtration
- Mechanical and biological filtration
- UV sterilisation
- Aeration and oxygen levels
- Skimming and debris removal
- Nutrient and phosphate management
- Water chemistry
- Safe electrical planning
- Access for servicing
- Long-term maintenance





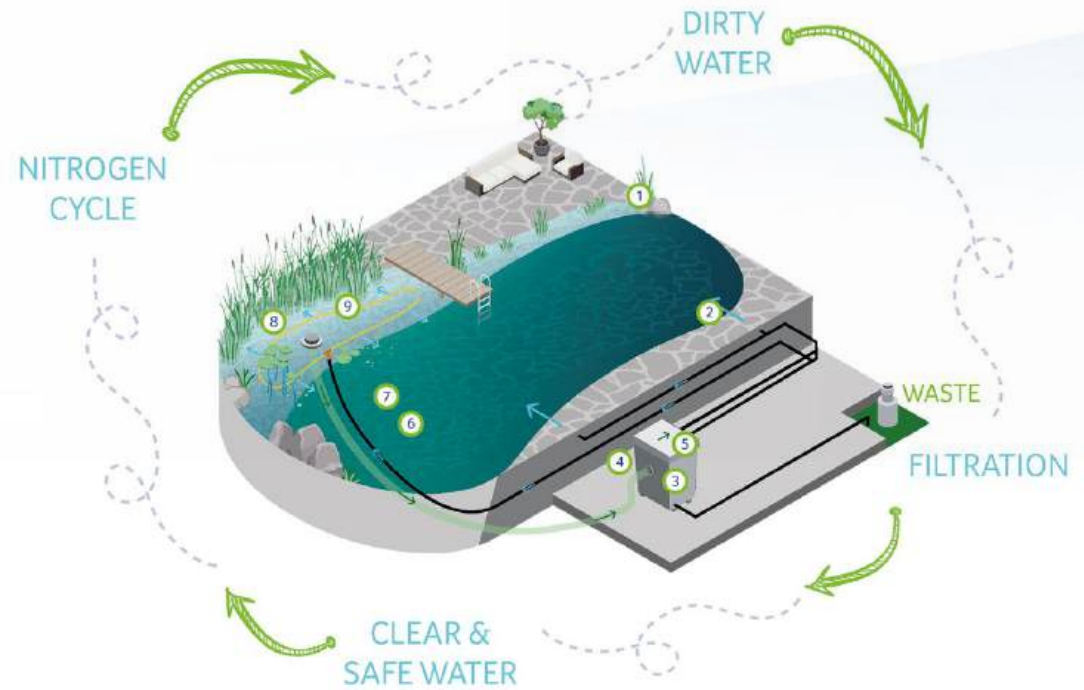
The Michael Wheat System

The Michael Wheat System brings together proven equipment, technical design and years of on-site experience.

Each project is designed around the site, water volume, intended use and level of control required.

The system may include external filtration, UV, aeration, skimmers, pumps and phosphate control, depending on the requirements of the project.

This gives our clients a swimming pond with natural beauty, supported by a controlled and engineered system behind it.



1



PHOSPAT FF
Auto Top-Up and fill

2



AQUAMAX ECO EXPERT
Pump feed to filter

3



PROFICLEAR COMPACT-M PUMPED OC
Filtration, Mechanical and Biological

4



AQUAOXY
Aeration for Biological Filtration

5



BITRON PREMIUM UV
Ultra Violet Filtration
Kills harmful Bacteria i.e:
Escherichia coli (Ecoli),
Pseudomonas aeruginosa (Swimmers Ear),
Leptospirosis (Weils Disease).

6



AQUAOXY
Saturated Oxygen

7



AQUAOXY AERATOR BAR L
Saturated Oxygen

8



PROFISKIM 100
Skimmer to collect floating debris

9



PHOSPAT NPF 2 COMPLETE
Phosphate Filter



Do I need planning permission?

As a guide, outdoor ponds in back gardens are often treated as permitted development and may not require planning consent.

However, planning may be required where the property or land is subject to restrictions, including:

- Listed buildings
- National Parks
- Areas of Outstanding Natural Beauty
- World Heritage Sites
- Areas of archaeological significance
- Other protected or restricted land or conservation areas

Planning may also be affected by the wider landscaping, structures, levels, drainage or access requirements connected to the project.

We will identify likely planning considerations during the design process and advise on the next step where needed.





Planning support

Where planning is required, we can provide the drawings, statements and supporting information needed for the application.

We have a strong record of supporting swimming pond projects through planning, where required.

If your project requires planning, you can secure your build position with a **10% holding deposit**, and we will complete the planning work as part of that process.

If planning is not approved, the holding deposit is returned.

Planning requirements vary by site, so this will be reviewed as part of the Design Plan process.

The Ponds by Michael Wheat Way



The Enquiry

01 The Enquiry

Complete the enquiry form, email, WhatsApp or call us to discuss your project.

02 The Initial Enquiry Call

We will call you to find out more about your project and see if we are the right fit for each other.

03 The Project Planning Video Call

We will talk through similar projects, explain our Design Plan Service and discuss the next step.

If we are both aligned, we will book in the Design Site Visit.

The Design Phase

04 The Design Site Visit

Where appropriate, we will arrange a Design Site Visit to assess the site, understand the opportunity and discuss the likely project investment.

During the visit, we complete the necessary surveying so we can design your project properly.

We will consult with you on site and, based on your vision and the feasibility of the project, give you an estimated cost for the project.

If the project is aligned, the next step is to move into our Design Plan Service.



05 Concept Meeting

Upon receipt of the Design Plan fee, we will commence with the design of your project.

At this stage, we prepare the concept and price the project around the agreed design direction.

We will then talk you through the design direction, current costings and any areas that may need refining.

If the investment is higher than expected, we can review the design and discuss what could be adjusted to better align with the investment level.

This is a collaborative stage to confirm the project direction, resolve any key details and prepare for the final Design Reveal.



The Installation

06 Design Reveal

Your design is now completed and ready to present. In this meeting, we will confirm:

- The final project investment, which will have been discussed during the concept stage
- The design of the project, including high quality 3D renders showing your pond in situ
- What the investment includes
- Maintenance packages
- Our guarantees and aftercare service
- Payment terms
- The proposed start date
- Introduction to your installation team

07 Installation

We deliver exactly what we have designed for you.

Once the securing deposit is paid, we mutually agree the installation date and book the project into our schedule.

Your Project Coordinator will go through the finer details of the installation before work begins.

During the installation, the team will usually work from 7am to 6pm.

Once complete, the Project Manager will review the completed project with you.

Our labour is guaranteed for 5 years and the filtration system has its own manufacturer guarantee.

We will also complete an aftercare visit to see how the project is settling in and to go over any maintenance requirements you are unsure about.



The Ponds by Michael Wheat Way, explained

The Enquiry Stage

The first stage is about understanding the project, the site and whether there is a clear fit.

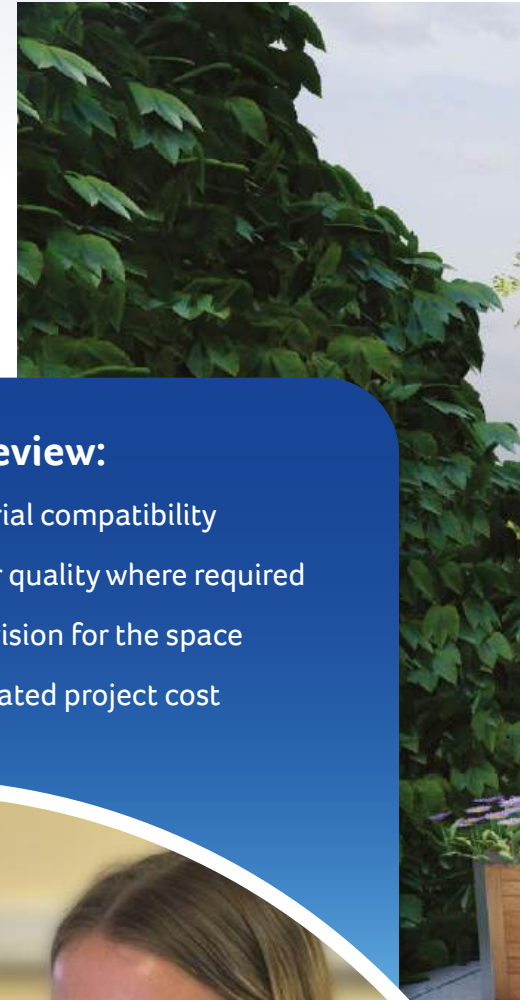
Once you enquire, we will arrange an initial call to learn more about your project, your site, your timing and the likely level of investment required.

If the project appears aligned, we will then arrange a Project Planning Video Call. This is where we talk through similar projects, explain the Design Plan Service and discuss the next step.

If we are both aligned, we will book in your Design Site Visit.

During the Design Site Visit, we review:

- Access, obstacles and logistics
- Site levels and measurements
- Feasibility
- Pond position and design potential
- Material compatibility
- Water quality where required
- Your vision for the space
- Estimated project cost





Inside the Design Plan Service

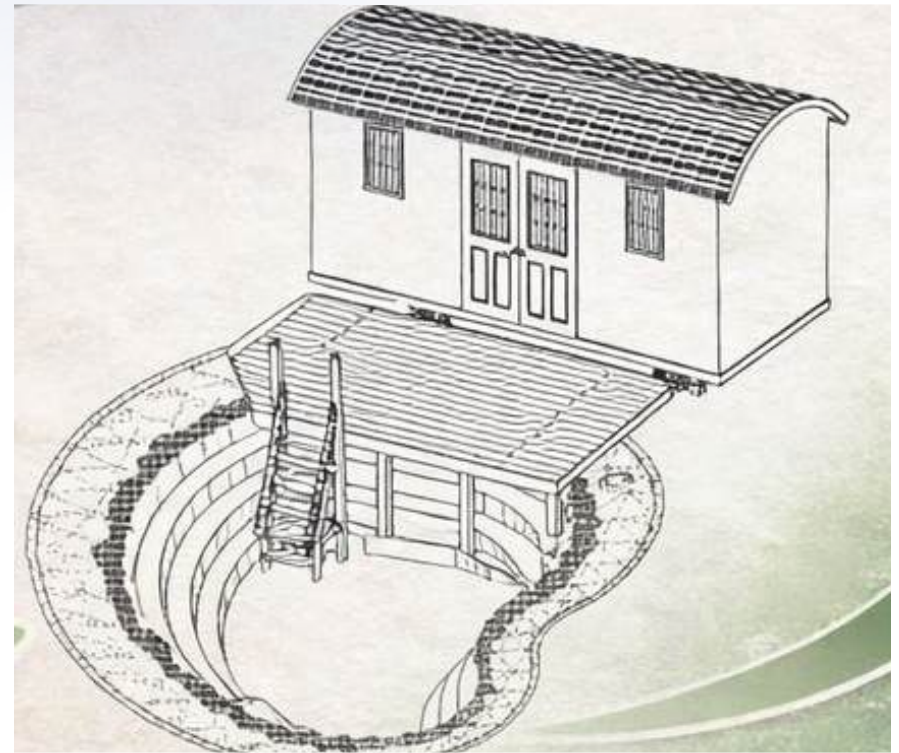
This is where your project is developed properly.

Once the Design Plan Service is agreed, we bring together your brief, the site information and our technical knowledge.

We develop the concept around how the pond should look, how it should work and how it should sit within the garden.

At this stage, we also review the technical requirements, including water movement, filtration, UV, aeration, materials and access.

The aim is to create a design that is visually right, technically sound and realistic to build.



Concept, costing and refinement

The design plan allows us to price the project properly, based on the design direction and technical requirements rather than guesswork.

We will prepare the concept, model and accurate project costing, then review the project with you before the final design is completed.

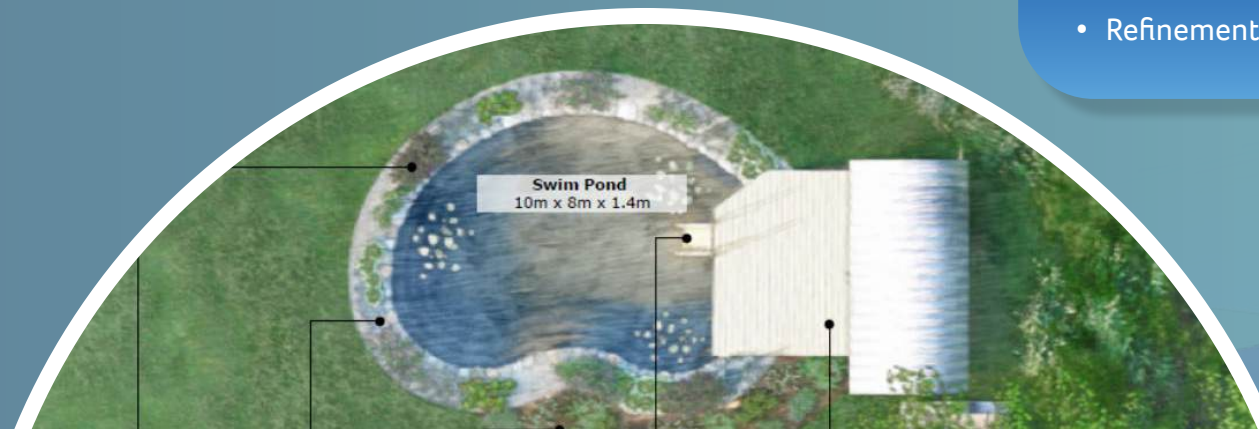
If the investment is higher than expected, we can discuss what could be adjusted before moving into the final Design Reveal.

This stage keeps the project aligned, commercially realistic and properly considered before a build commitment is made.



This stage includes:

- Concept design
- Project model
- Technical review
- Accurate project costing
- Progress review meeting
- Refinement before final design



The Design Reveal

The Design Reveal is where we present your completed design.

At this stage, you will see how the pond sits within your landscape and understand the thinking behind the layout, materials, technical system and investment.

The Reveal brings together the design work, project model, technical review and costed proposal into one clear presentation.

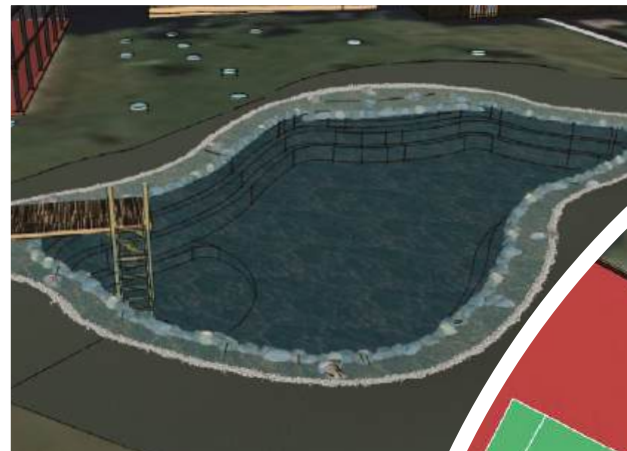
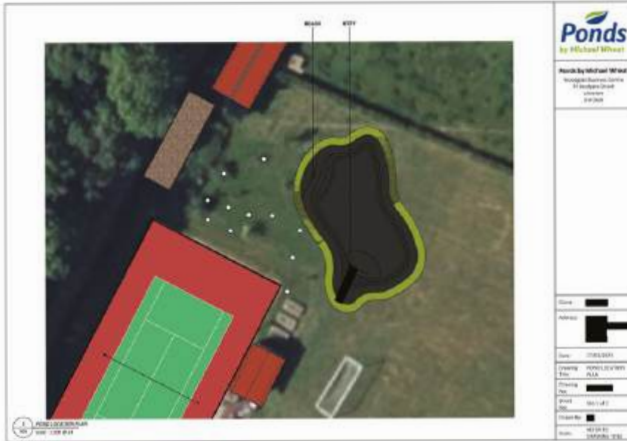
This gives you the information needed to make a properly informed decision before moving into installation.



What we confirm

- Final design direction
- High-quality 3D renders
- Pond layout and position
- Technical equipment choices
- Filtration and water movement strategy
- Materials and planting direction
- Project investment
- Proposal of works
- Maintenance and aftercare options
- Company guarantee information





From design to installation

Once the design is approved and the construction proposal is agreed, we move the project into scheduling.

At this stage, the installation date is confirmed, the project is prepared internally and the delivery team is briefed.

Your Project Coordinator will go through the finer details before work begins, so the team has everything needed to deliver the project properly.

The installation is then carried out from the agreed design, specification and proposal of works.

Built to the agreed design

Throughout the build, your project is managed through the Ponds by Michael Wheat delivery process, with site communication, health and safety and installation standards handled by the team.

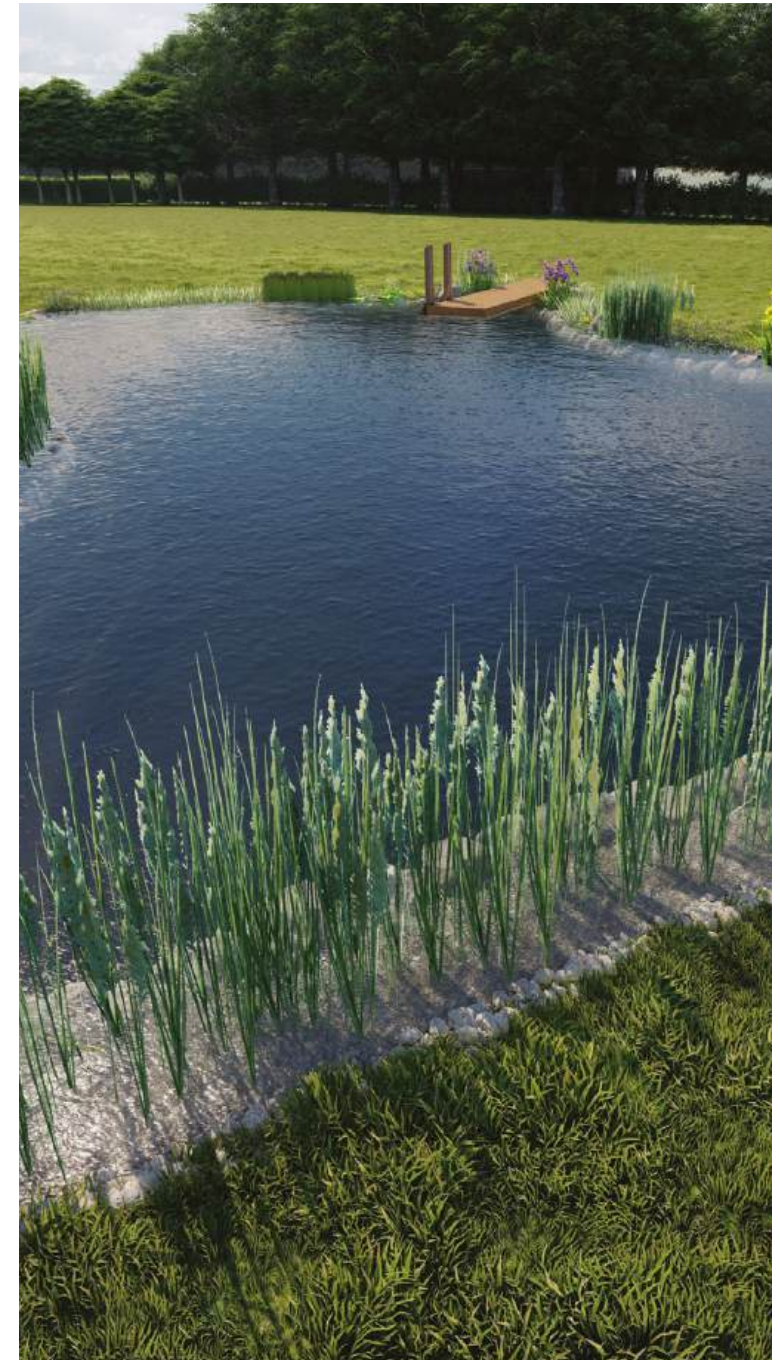
Once complete, the Project Manager will review the project with you and explain the key pond equipment where required.

Our labour is guaranteed for 5 years, and the filtration system carries its own manufacturer guarantee.

We will also complete an aftercare visit to review how the project is settling in and go over any maintenance requirements.

Before installation begins:

- Construction proposal agreed
- Project information prepared
- Securing deposit paid
- Delivery team briefed
- Installation date confirmed

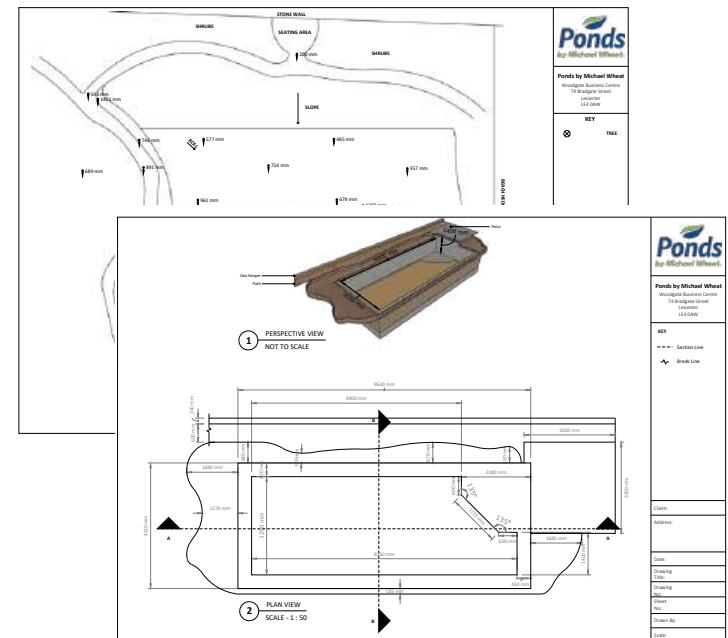




Client brief

The client wanted a traditional swimming pond with strong visual impact, designed to sit naturally within a garden with changing levels.

The brief was to create a pond that felt established, elegant and connected to the wider landscape.





Challenge

The changing land levels needed to be carefully understood before the design could be resolved.

Access, pond position, walling, planting and surrounding treatment all had to be considered together so the finished pond felt natural rather than forced into the space.

Design solution

The Design Plan Service allowed us to resolve the layout, levels, technical drawings and visual direction before moving into build.

This gave the client a clear understanding of how the pond would sit within the garden and allowed the project to be properly costed before installation.

Result

A walled swimming pond that feels settled within the landscape, with the structure, detail and finish needed to make the project work properly on site.



Before

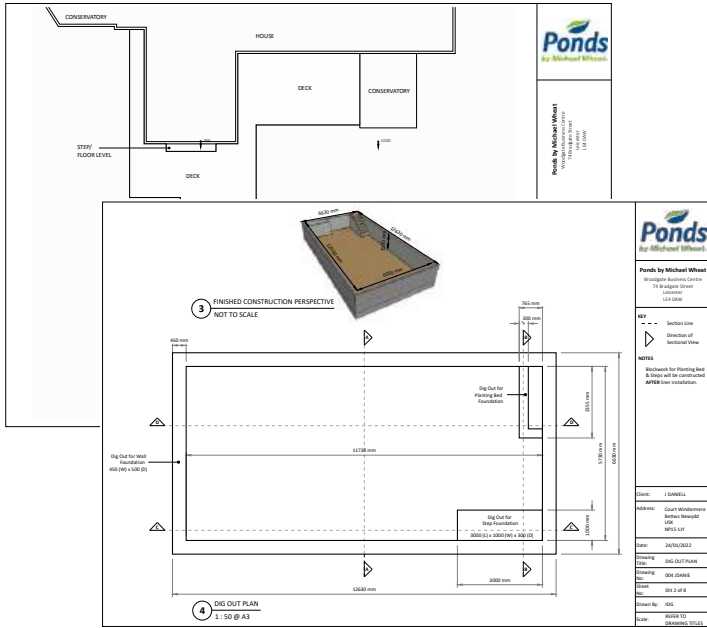
Formal SwimPond

Case Study 2 - Usk UK

Client brief

The client wanted a formal swimming pond that worked with the character of the house and created a relaxed space for family and entertaining.

They wanted the pond to feel refined and structured, without becoming too heavily planted.



Challenge

The design needed to sit comfortably with the architecture of the property while still creating a calm, usable swimming space.

The client wanted a softer planted feel without compromising the engineered filtration and circulation strategy needed for consistent water quality.

Design solution

The Design Plan Service allowed us to resolve the pond position, access, shape, surrounding finish and technical approach before moving into build.

The design balanced formal structure with natural detail, while keeping the swimming area clean, practical and fully usable.

Result

A clean, formal swimming pond that sits confidently within the garden and provides a strong lifestyle space close to the house.



Design render



Completed project



Hybrid SwimPond

Case Study 3 - Manchester UK



Before

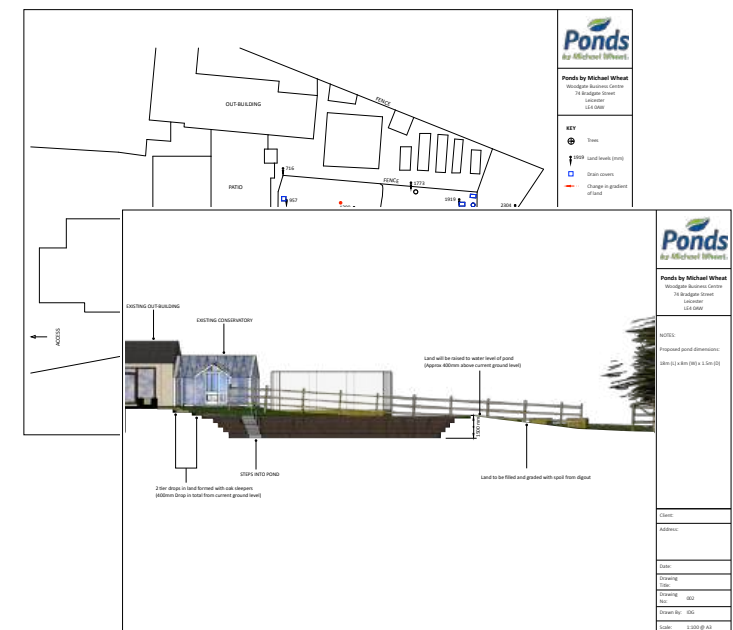
Client brief

The client wanted a natural-edge swimming pond that could be seen from the kitchen and used regularly throughout the year.

They wanted easy access to the water without the pond feeling over-designed or disconnected from the garden.

Challenge

The garden had a noticeable slope, so the levels, access and water position had to be carefully resolved before construction. The pond needed to feel natural in the landscape while still being practical for everyday swimming.



Design solution

The Design Plan Service allowed us to work through the level changes, create a flat water table and use oak sleepers to form natural steps down to the pond.

The design connected the pond back to the house while making the most of the existing slope.

Result

A swimming pond that feels settled within the garden, works with the land levels and gives the client practical access for regular use.



Design render



Completed project







Your next step

The next step is to speak with our team so we can guide you to the right stage of the process.

Whether you are at the start of your enquiry or ready to move forward after a Design Site Visit, we will confirm the appropriate next step.

This may be an Initial Call, Project Planning Video Call, Design Site Visit or the Design Plan Service.

For suitable projects, the Design Plan is the first formal investment towards a Ponds by Michael Wheat build.

Continue with Ponds by Michael Wheat

 0116 240 3735

 yourjourneybegins@pondandgardendesign.co.uk

 www.pondandgardendesign.co.uk

View us on our socials at

@pondsbymichaelwheat






Ponds
by Michael Wheat